

Bio - Optica

Improving Pathology

BIOCARE
M E D I C A L

VALENT[®]

The Power of Advanced Automation



Clinical

High-Throughput

Full Automation

Quality Performance

www.biocare.net

biocare.net/VALENT



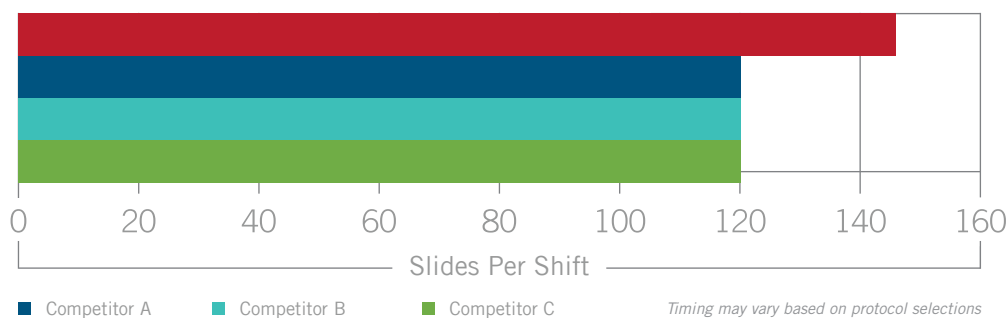
Powerful Processing for Maximum Productivity

VALENT breaks the 30-slide barrier with true parallel processing of 48 slides simultaneously, capable of running an unparalleled 144 slides in a single shift with minimal user interaction. VALENT's high capacity lithium battery, in addition to boosting AR, acts as electrical back-up in the event of power loss.

Under-slide heaters, and the associated power draw on standard electrical circuits for parallel slide processing, has limited the competition to maximum runs of 30 slides. Even with claimed run times of 2.5 hours for 30 slides, the maximum slides per standard shift is 120.



Competitors



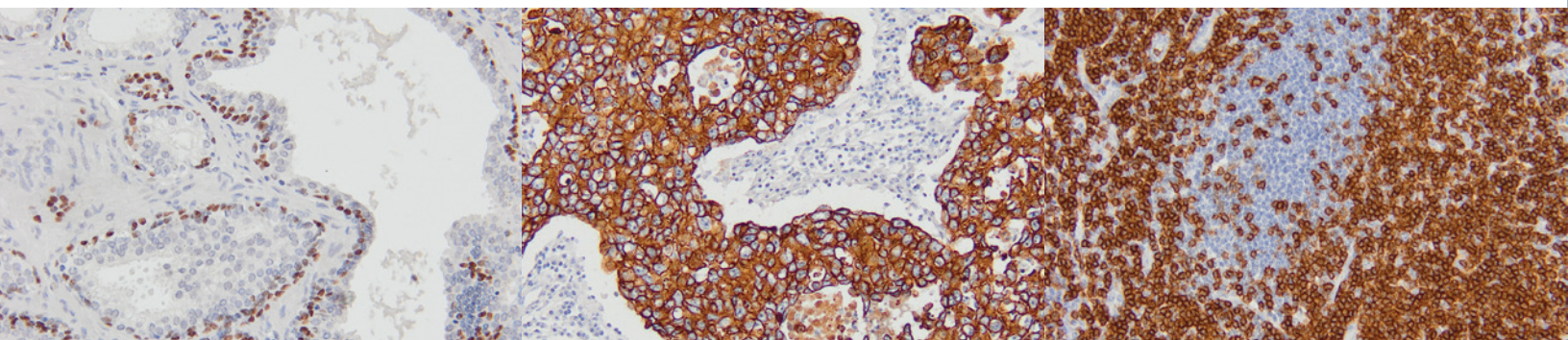
Open System Increases Efficiency & Flexibility

For ultimate convenience, Biocare Medical offers a full line of high quality ready-to-use reagents that have been optimized for maximum performance on the VALENT. When needed, the open design of VALENT enables you to apply enzyme pre-treatments, antibodies, detections, or chromogens from any source. This capability maximizes laboratory efficiency and flexibility by meeting a broad range of IHC testing needs.

p63 - nuclear

CK8/18 - membrane

CD3 - cytoplasmic



The Power of Advanced Automation

VALENT is designed to be an innovative, fully automated, high throughput instrument, producing quality stains that support the daily demands of your clinical laboratory.

Automate the Entire IHC Protocol with Enhanced Workflow

Inuitive User Interface

Step-by-step programming

Automatic error checking

DePar to Counterstain

Full protocol automation, ready to use reagents

Customizable pre-treatment options

Self Cleaning

Minimal maintenance demands

Maximizes walk-away time

High Throughput

48 slide capacity

Simultaneous multiplex IHC capability



LOAD & GO ▶

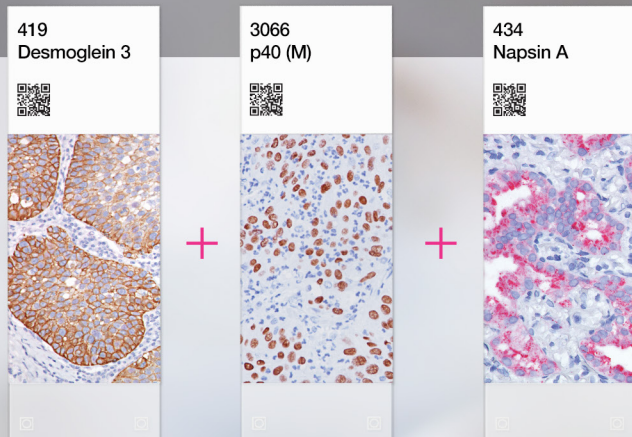
Instrument Specifications

Cat. No.	VLT8101
Slide Capacity	48
Independent Slide Trays	4 Trays, 12 Slides Per Tray
Refrigerated Reagent / Mixing Vial Rack	44 Positions, 20mL Vials; Temperature Range: Room Temperature to 10°C Below Room Temperature
Antigen Retrieval Temperature Range	Room Temperature to 98°C at Sea Level
Reagent Dispensing Volume	300µL
Multi-Dispensing Syringe Capacity	300µL – 14.4mL (48 slides x 300uL/slide)
DePar Dispense Volume	1mL Per Slide
Bulk Reagents	4
Waste Outlets	2
Waste Separation	Separates Hazardous and Non-Hazardous
Unit Control	One Instrument Per Computer
Instrument Dimensions	40" W X 24" D X 26" H / 102 cm W X 61 cm D X 66 cm H
Instrument Weight	245lbs / 111.1kg
Electrical requirements	<p>Power input: 1800 (1800VA) / Power source: 100-120 VAC, 50/60Hz</p> <p>The VALENT cannot be used without the VALENT Cart, power supplied to the VALENT from the VALENT Cart may reach 3600W at 120V.</p> <p>The use of a dedicated circuit capable of delivering a minimum of 1850W continuously with less than 5% voltage sag is required for the instrument.</p> <p>Avoid connecting the instrument to the same circuit as other equipment.</p>

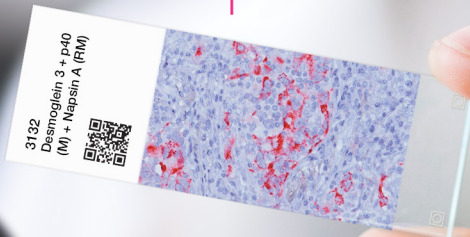
Cart Specifications

Cat. No.	VLT8102 (50 Hz), VLT8103 (60 Hz)
Bulk Carboy Capacity	8L
Bulk Carboys	The VALENT Cart Holds 6 Carboys
Secondary Containment Capacity	11L Maximum Capacity
VALENT Cart Dimensions	40"W X 24"D X 30"H / 102cm W X 61cm D X 77cm H
Cart Weight	250lbs / 113.4kg
Main Supply Voltage Tolerance	±10%
Electrical Requirements	<p>Power output: 3600W (3600VA)</p> <p>Power source: 100-120 VAC 50/60Hz</p> <p>Requires a step-down transformer rated for 2kW for operation using 220V mains (not supplied).</p> <p>Cart must be factory-configured for 50Hz operation.</p> <p>Do not plug anything into the VALENT Cart besides the computer and label printers.</p>
Undervoltage & Overvoltage Protection	The VALENT Cart is protected from undervoltage /overvoltage conditions by internal relays built into the inverter / charger which will limit input voltage to 85-140VAC. Operation is prevented if input voltage is outside the specified range.

Multiplex IHC



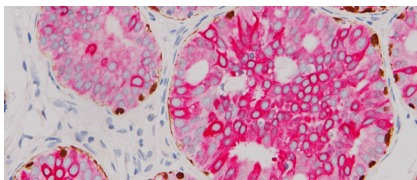
Up to 4 Antibodies, One Single Slide



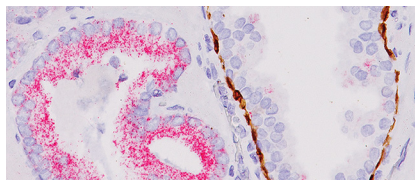
Preserve Patient Tissue · Save Time & Expense · Improve Patient Care

Biocare Medical's innovative range of IHC products includes novel antibody combinations and highly sensitive multiplex detection technology. These products allow for simultaneous IHC testing of morphologically distinct antigens which prevents the redundant staining of sections in cases where tissue is limited. Use of Multiplex IHC reagents also decreases total protocol time and the number of slides required, resulting in significant reagent and labor cost savings.

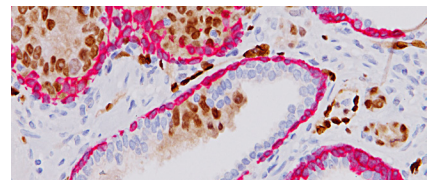
- ▶ Simultaneously test for multiple IHC markers on one slide
- ▶ Replace up to four single antibodies
- ▶ Prevents the unnecessary staining of limited tissue
- ▶ Reduce labor & reagent cost by >50 percent



CK5/14 + p63 + CK7/18



CK HMW + p63 + AMACR (RM)



ERG-2™ (ERG + CK5)

Multiplex IHC Antibodies

Bladder Markers	Status	Clone	Cat. No.
Uro-2™ (CK20 + p53)	IVD	Ks20.8 + EP9	API 3001DS
URO-3 Triple Stain™ (CD44 + p53 + CK20)	IVD	BC8 + EP9 + Ks20.8	PM 370TS
Breast Markers	Status	Clone	Cat. No.
CK5/14 + p63 + CK7/18	IVD	XM26/LL002 + 4A4 + BC1/EP30	PM; OAI; VP; VLTMR 360
GCDFP-15 + Mammaglobin	IVD	D6 + 31A5	PM 317DS
p120 + E-cadherin	IVD	98/pp120 + EP6	API; VLTMR 3011
CK HMW + p63 + AMACR (RM)	IVD	13H4 + 34BE12 + 4A4	IPI; OAI; API; VLTMR 3154
Cell Proliferation/Death Markers	Status	Clone	Cat. No.
Ki-67 + Caspase-3	IVD	DVB-2 + Polyclonal	PPM 240DS
Colon Markers	Status	Clone	Cat. No.
CDX2 (M) + CDH17 (RM)	IVD	CDX-88 + EP86	API 3135DS
CDX2 +CK7	IVD	CDX2-88 + BC1	PM 367
Lung Markers	Status	Clone	Cat. No.
Desmoglein 3 + p40 (M) + Napsin A (RM)	IVD	BC11 + BC28 + BC15	API 3132DS
Desmoglein 3 + Napsin A	IVD	BC11 + Polyclonal	PPM 428DS
p63 + CK5	IVD	4A4 + EP42	PM; VLTMR 391
p63 + TRIM29	IVD	4A4 + Polyclonal	PPM; VLTMR 427
TTF-1 + CK5	IVD	8G7G3/1 + EP42	PM 425DS
TTF-1 + Napsin A	IVD	8G7G3/1 + Polyclonal	PPM 394DS; IPI 394DS
TTF-1 + Napsin A (RM)	IVD	8G7G3/1 + BC15	API 3078DS
Melanoma Markers	Status	Clone	Cat. No.
Pan Melanoma (MART-1 + Tyrosinase) + Ki-67	IVD	M2-7C10/M2-9E3 + T311 + SP6	PM; VLTMR 362
MART-1 + Tyrosinase + pHH3	IVD	BC37, Biocare Clone, M2-7C10 + M2-9E3, T311	API 3186
Prostate Markers	Status	Clone	Cat. No.
CK5/14 + p63 + P504S	RUO	XM26/LL002 + 4A4 + Polyclonal	PPM 225DS; IPR 225DS
CK HMW + p63 + AMACR (RM)	IVD	34βE12 + 4A4 + 13H4	API; IPI; OAI; VLTMR 3154
ERG-2™ (ERG + CK5)	IVD	9FY + EP42	API 437DS
Unknown Origin Markers	Status	Clone	Cat. No.
CDX2 + CK7	IVD	CDX-2-88 + BC1	PM 367DS
Lymphoma Markers	Status	Clone	Cat. No.
CD4 + CD8	IVD	4B12 + SP16	API 3157DS
Kappa (M) + Lambda (P)	IVD	L1C1 + Polyclonal	API 3159DS

Multiplex IHC Detection

Multiplex Name	Status	Composition	Cat. No.
MACH 2 Double Stain 1	IVD	anti-Mouse-AP + anti-Rabbit-HRP	MRCT523
MACH 2 Double Stain 2	IVD	anti-Mouse-HRP + anti-Rabbit-AP	MRCT525
VALENT Val Plex 1	IVD	anti-Mouse-AP + anti-Rabbit-HRP	VLT 8035
VALENT Val Plex 2	IVD	anti-Mouse-HRP + anti-Rabbit-AP	VLT 8022
intelliPATH Multiplex Secondary Reagent 2	IVD	anti-Mouse-HRP + anti-Rabbit-AP	IPSC5004

www.bio-optica.it



Bio - Optica

