

P1000 High Throughput Digital Slide Scanner

Digital pathology holds the potential to impact therapeutic strategies for patients. With more information being revealed from tissue samples in a quantitative and documented environment, it may enable physicians and pathologists to create dedicated and personalized treatment regimens which will ultimately affect the survival rates of patients and their quality of life.

A digital slide can be stored and shared in a much easier and more efficient way compared to a physical one and the benefits of adopting a digital workflow in a Pathology Laboratory are several: improved productivity, reduction in errors due to misidentification, improved analysis (thanks to automated), long-term cost efficiency (reduces the need for couriers and the requirement for the researchers to travel).



PANNORAMIC® 1000, the high-end, extra fast and super-efficient slide digitalization system by 3DHitech/Epredia.

PANNORAMIC® 1000 is the only digital scanner on the market with a capacity up to 1000 standard slides or up to 840 standard and double-width slides. It is able to process up to 100 slides per hour, meeting every expectation of any Laboratory requiring a system able to guarantee both high productivity and excellent scan quality.

The loading and scanning process is fully automatic and the rack order can be chosen by the user to best suit any urgency.



20X objective (NA 0.8)
Native 40X
Resolution **0.24 µm/pixel**

Applications: HE and IHC histological routine



40X objective (NA 0.95)
Native 80X
Resolution **0.12 µm/pixel**

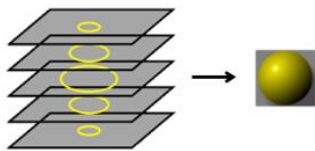
Applications: HE and IHC histological routine for thick samples or whenever more details are required (e.g.: BOM), conventional cytology (gyn and non-gyn), thin-layer cytology (gyn and non-gyn)

PANNORAMIC® 1000 is equipped with two Carl Zeiss Plan Achromat objectives (20X and 40X) and is also has a third slot that will be soon implemented for additional applications.

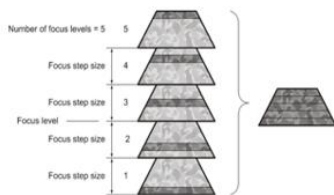
The presence of two objectives gives several advantages:

- **Better accuracy in the diagnosis** → it is possible to display a higher number of details, making the diagnosis easier to reach by the Pathologist
- **Shorter elaboration times** → thanks to the high image resolution and the possibility to choose the objective best suited to the sample type, the need to re-scan is greatly reduced
- **Complete and clear tracking of cases/patients** → the entire workflow of the sample can be tracked and included in the LIS, making the whole case accessible in a clear and complete manner to the Pathologists.

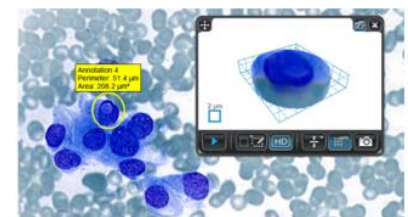
The digital scanners designed by **3DHitech/Epredia** grant higher accuracy in capturing all the tissue details also thanks to technologies that allow the sample to be scanned in multiple layers so to have a more comprehensive view of the sample.



Z-Stack: this technology allows the scanning of the sample in multiple layers and makes it possible to recreate and display a particular area of interest in 3D through the Viewer software. This is an unique feature of CaseViewer™, the Digital Slide Viewer software designed by 3DHitech.



Extended Focus: this features allows the instrument to capture the best focus for every single layer. The final image is a merging of all the layers so that the tissue details are displayed at the best possible focus.



The final image is more accurate and displays a higher number of details, while also maintaining the same file size.